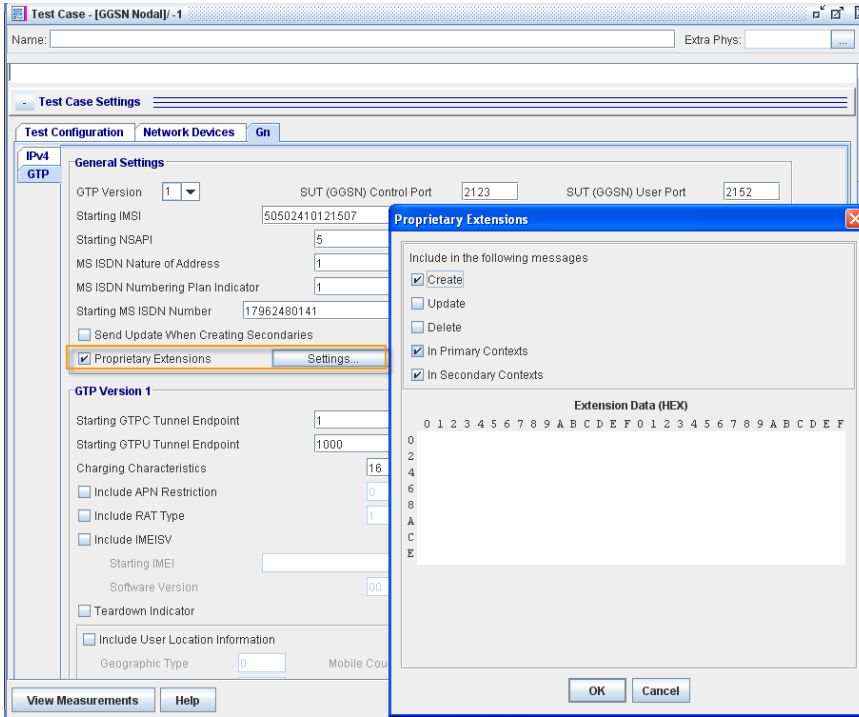


You are able to set PCO IE of DNS via proprietary extensions in Gn/GTP table.

For example:



No.	Time	Source	Destination	Protocol
1	0.000000	IntelCor_d4:65:e9	Broadcast	ARP
2	0.000045	IntelCor_d4:66:09	IntelCor_d4:65:e9	ARP
3	0.000056	10.202.86.1	10.202.87.1	GTP
4	0.000122	10.202.87.1	10.202.86.1	GTP

<

- ⊞ Access Point Name
- ⊞ Protocol configuration options
- ⊞ Protocol configuration options
  - Length: 20
  - Configuration protocol (00000xxx): 1
  - Protocol 1 ID: IP Control Protocol (0x8021)
  - Protocol 1 length: 16
- ⊞ PPP IP Control Protocol
  - Code: Configuration Request (0x01)
  - Identifier: 0x01
  - Length: 16
  - ⊞ Options: (12 bytes)
    - Primary DNS server IP address: 10.10.10.10
    - Secondary DNS server IP address: 11.11.11.11
- ⊞ GSN address : 10.202.86.1