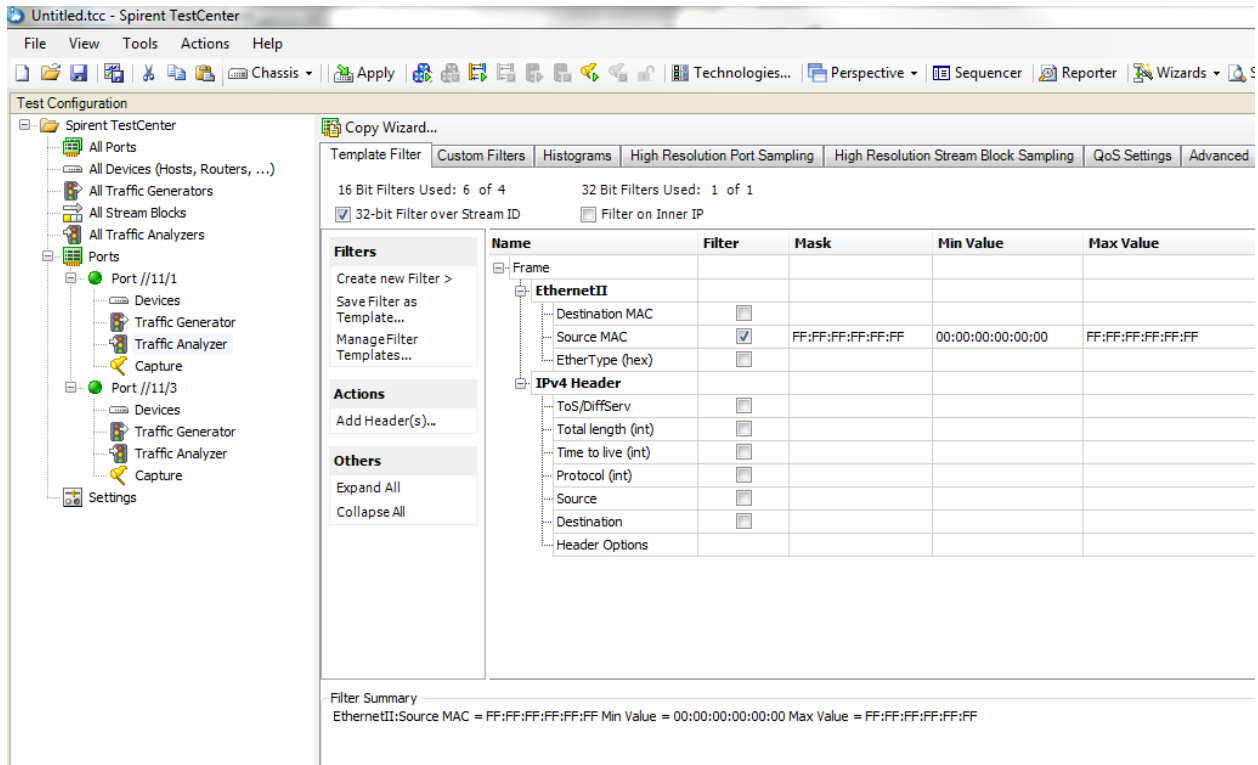
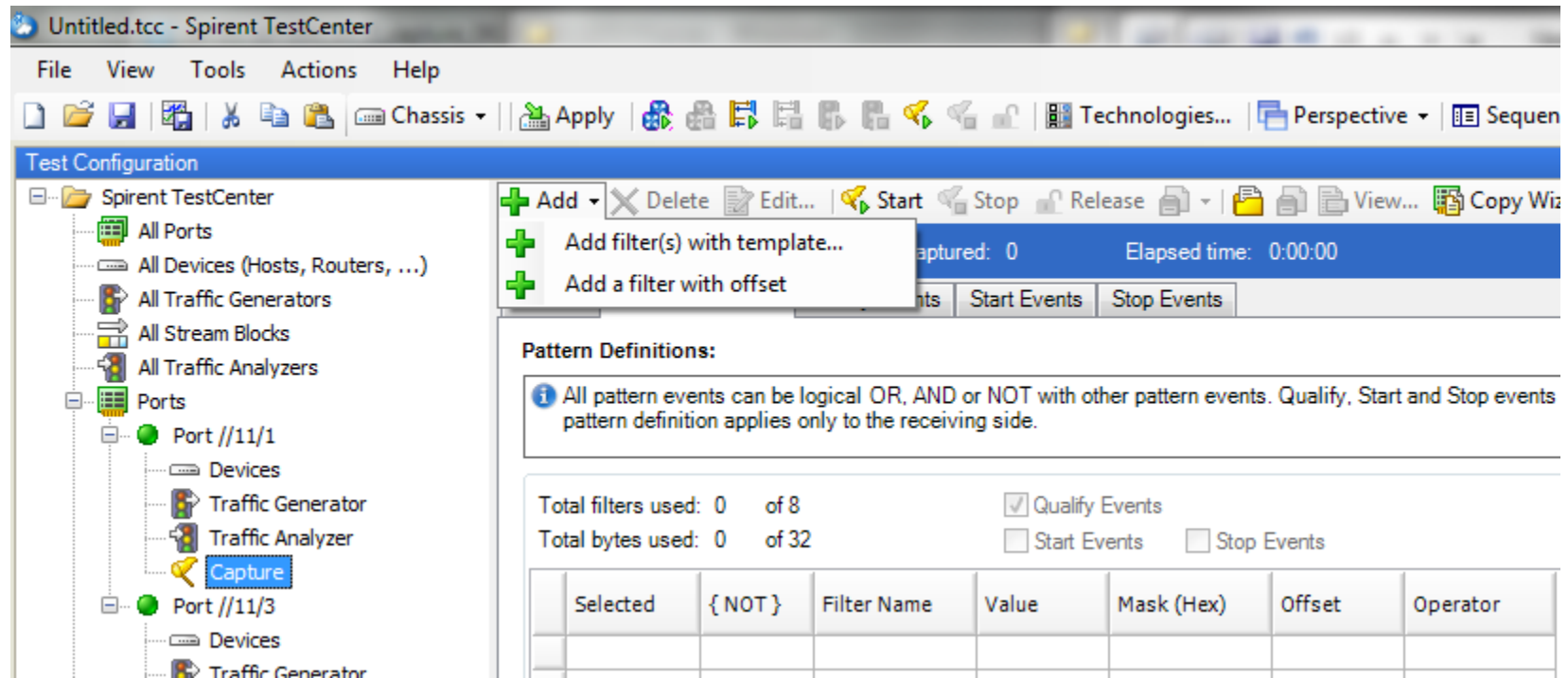


I summarize TestCenter has ability to filter the analyzer and capture using the frame template or using the byte offset.

On the Port Analyzer under Template Filter one can choose to filter any part of the header:



On the Port Capture under Pattern Definition, one can choose to add a Template or Custom Filter



Template Example:

State: Ready Frames captured: 0 Elapsed time: 0:00:00

General Pattern Definition Qualify Events Start Events Stop Events

Add Filter...

Pattern Matching works on fields from selected protocols. To ensure that the filters will work correctly, it is required that the frame you create contain the same headers as the one you expect to capture.

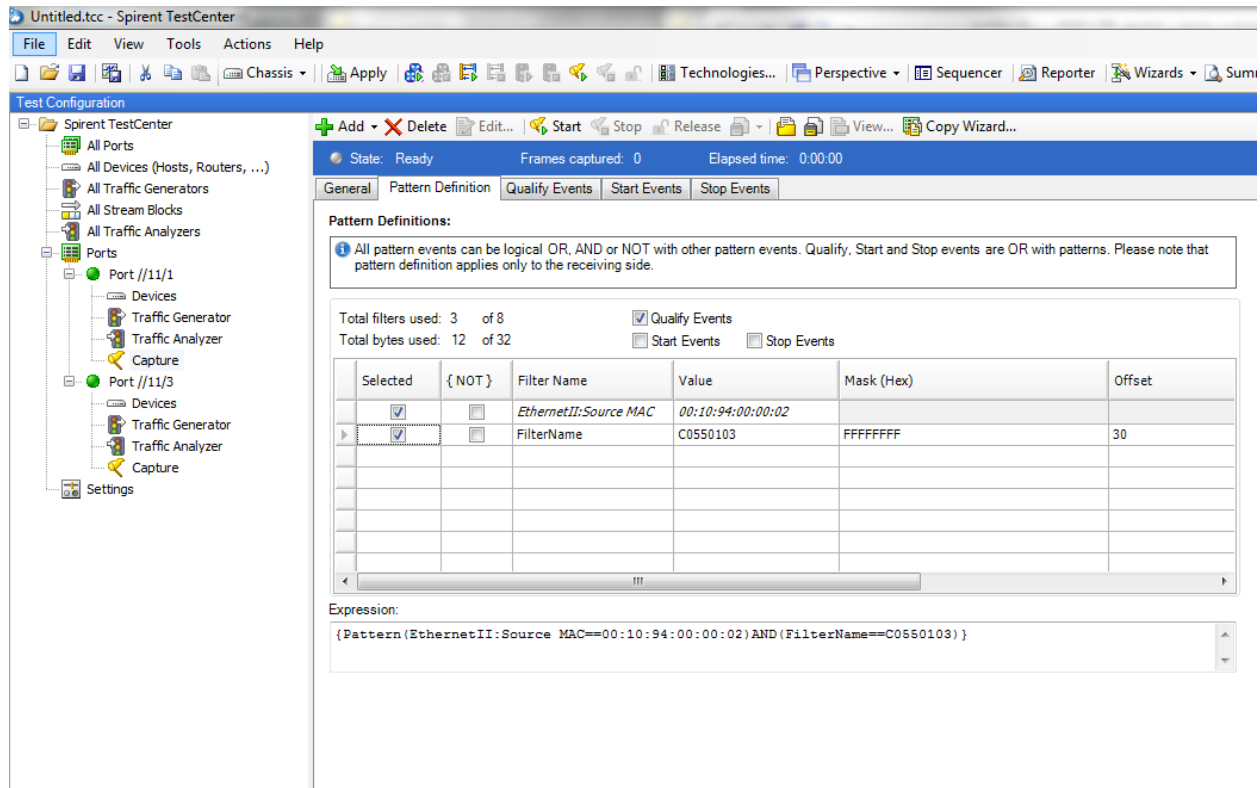
Show All Fields Allow Invalid Packets

Name	Filter	Value
[-] Frame		
[-] EthernetII		
Destination MAC	<input type="checkbox"/>	
Source MAC	<input checked="" type="checkbox"/>	00:10:94:00:00:02
EtherType (hex)	<input type="checkbox"/>	
[-] IPv4 Header		
ToS/DiffServ	<input type="checkbox"/>	
Total length (int)	<input type="checkbox"/>	
Time to live (int)	<input type="checkbox"/>	
Protocol (int)	<input type="checkbox"/>	
Source	<input type="checkbox"/>	
Destination	<input type="checkbox"/>	
Header Options		

Filter Summary
EthernetII:Source MAC = 00:10:94:00:00:02

OK Cancel

Template and Byte Offset Filter



When you are in any window, I mention you should be able to select F1 on your keyboard and open online Help for that specific window.

For GUI online Help, from the top menu, select Help -> Contents -> Setting Up the Packet Generator/Analyzer -> Setting Up Traffic Analyzers – Template and Custom Filters or -> Capture OverView – Frame Content Mode and Byte Offset Range Mode.

I agree there are more topics you can drill down for the Analyzer and Capture Filters.