



Inspired Innovation

**Spirent Abacus**

# **Add Time Interval**

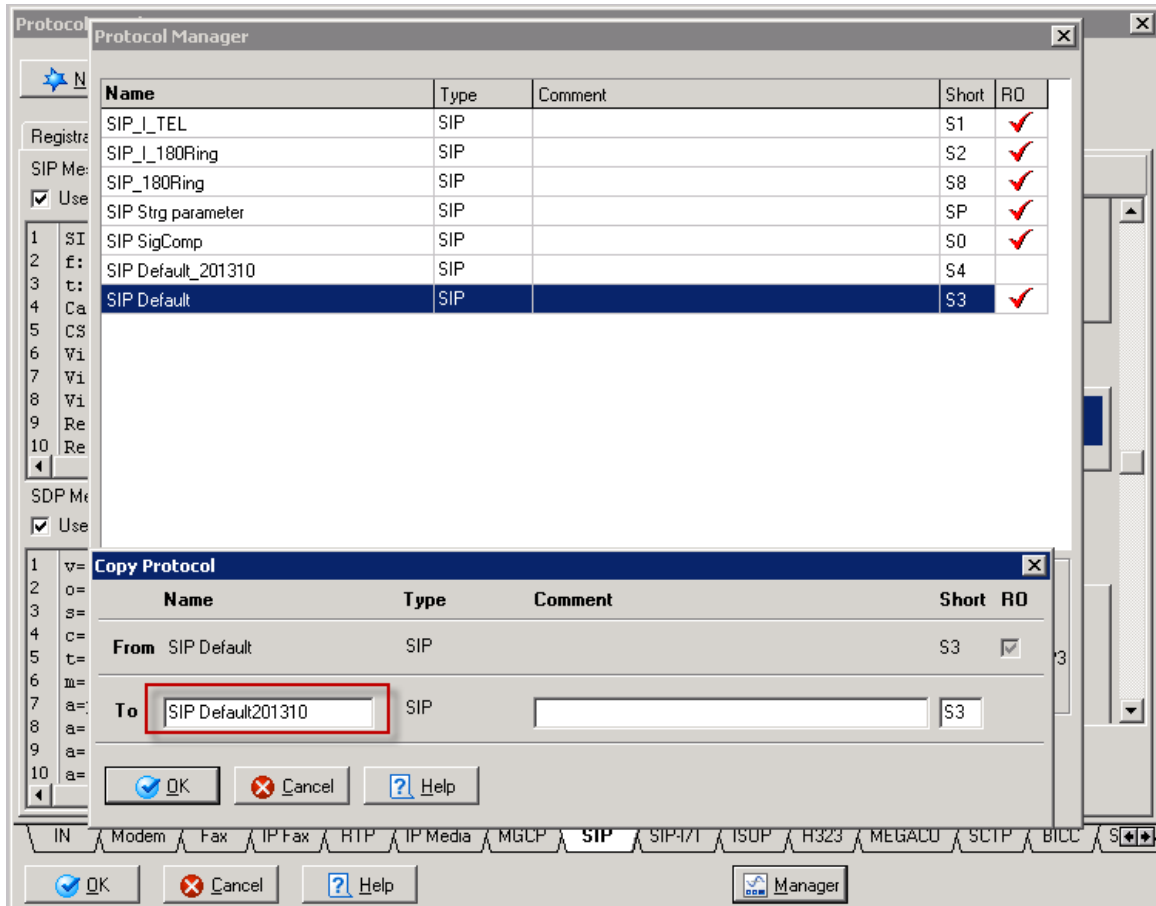
**Oct-2013**

## Introduction

The Time Interval is used to specify the delay in milliseconds before Abacus 5000 sends a response.

## Step by step instructions

1. New a protocol in Configure/Protocol Development, as below screenshot.



Copy a protocol

- In the new protocol call flow, add time interval to the response message that you want to add, here is a delay for 2xx on INVITE message:

The screenshot shows the 'Protocol Development' window for a SIP protocol. The 'Name' field is 'SIP Default\_201310' and the 'Abbreviation' is 'S4'. The 'SIP Message' section is active, showing a list of SIP headers and a sequence diagram on the right.

**SIP Message:**

```

1 SIP/2.0·{Res-code}·{Res-text}
2 f:·<{From-uri}>·tag={From-tag}
3 t:·<{To-uri}>·tag={To-tag}
4 Call-ID:·{Callid}
5 CSeq:·{Cseq-seq}·{Cseq-method}
6 Via:·SIP/2.0/{Via1-transport}·{Via1-ip}:·{Via1-p}
7 Via:·SIP/2.0/{Via2-transport}·{Via2-ip}:·{Via2-p}
8 Via:·SIP/2.0/{Via3-transport}·{Via3-ip}:·{Via3-p}
9 Record-route:·<{Route1}>{Route1-if}
10 Record-route:·<{Route2}>{Route2-if}

```

**SDP Message:**

```

1 v={V-version}
2 o={O-username}·{O-id}·{O-version}·{O-nettype}·{
3 s={S-name}
4 c={C-nettype}·{C-addrtype}·{C-addr}
5 t={T-start}·{T-end}
6 m={M1-type}·{M1-port}·{M1-transport}·{M1-fmt1}·
7 aptime:·{M1-a-ptime}
8 a=fmtp:·{M1-a-fmtp-fmt1}
9 a=fmtp:·{M1-a-fmtp-fmt2}
10 a=fmtp:·{M1-a-fmtp-fmt3}

```

The sequence diagram on the right shows a 'PRACK' message being sent, followed by a '2xx on PRACK' response. Below that, a 'CANCEL' message is sent, followed by a '2xx on CANCEL' response. At the bottom, an 'ACK on INVITE 2xx' message is shown with a 'Time Interval' of 50. A red box highlights the '2xx on INVITE' message and the 'Time Interval' field.

Add time interval to intended message

